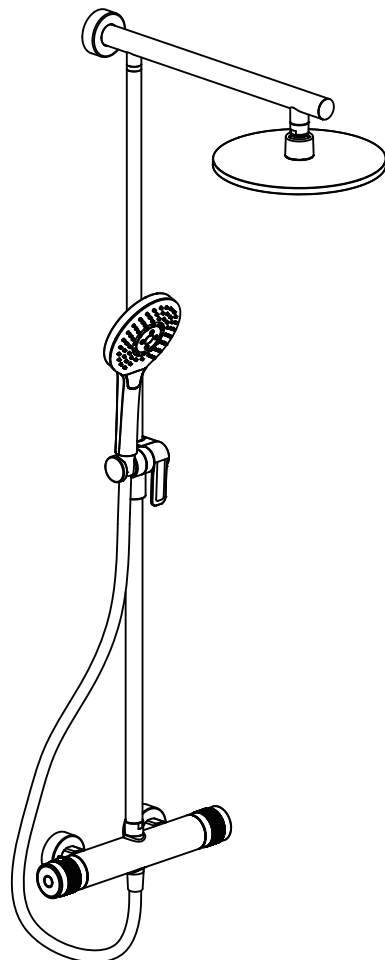
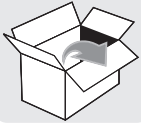


TOPINO



- DE** Montageanleitung
- EN** Assembly instructions
- FR** Instructions de montage
- IT** Istruzioni per il montaggio
- NL** Montageinstructies
- SE** Monteringsanvisningar
- CZ** Návod na montáž
- SK** Návod na montáž
- RO** Instrucțiuni de asamblare
- PL** Instrukcja montażu



A1



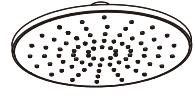
A2



2.5mm
A3



B



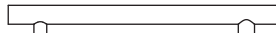
C



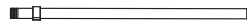
D



E



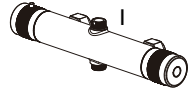
F



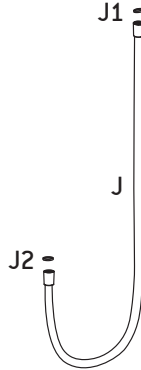
G



H



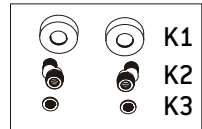
I



J1

J

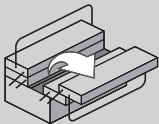
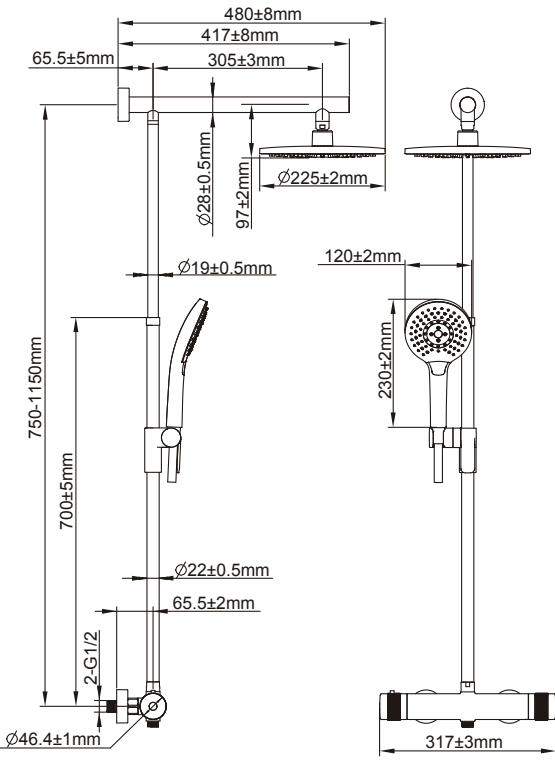
J2



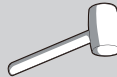
K1

K2

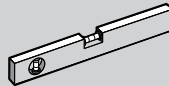
K3



PH



Ø6 mm

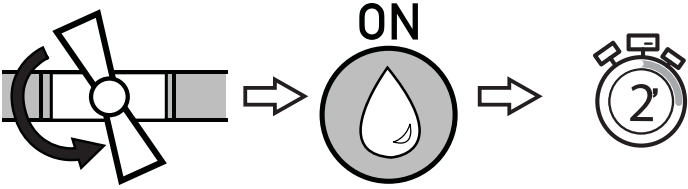


30'

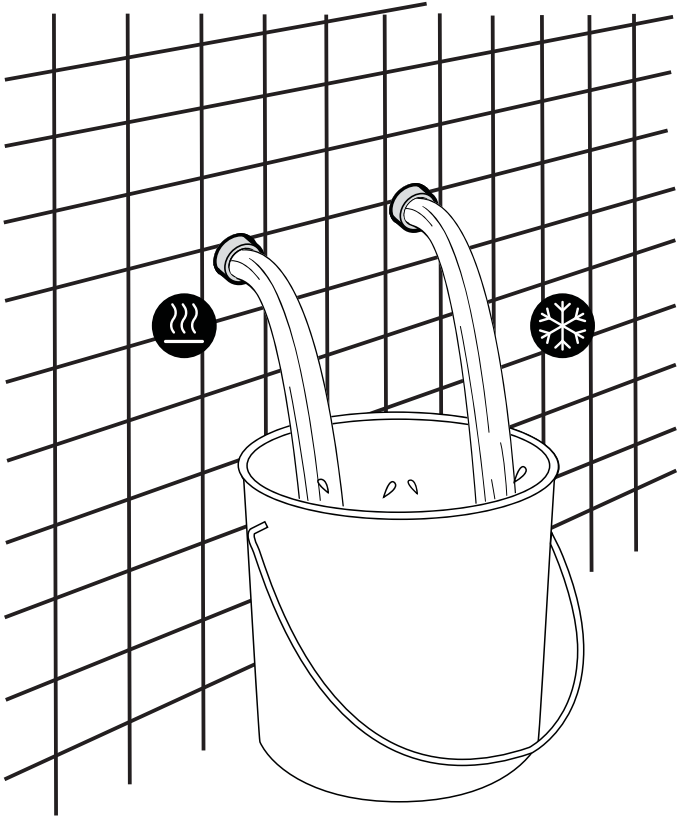




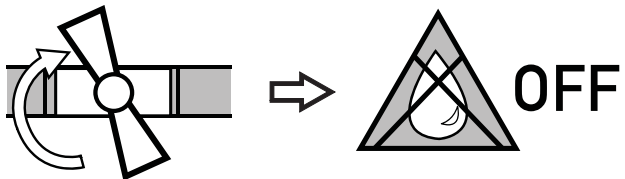
1

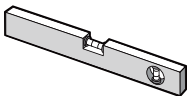
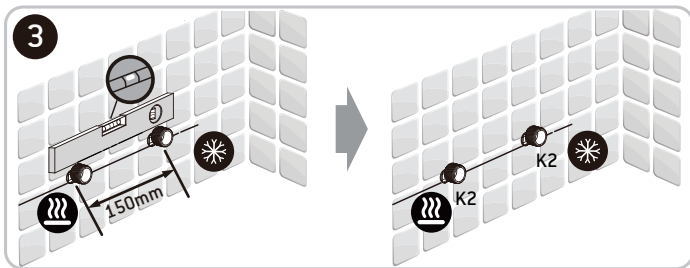
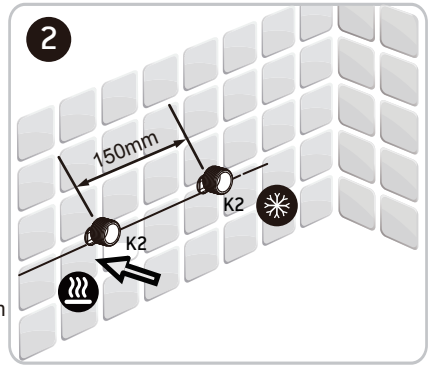
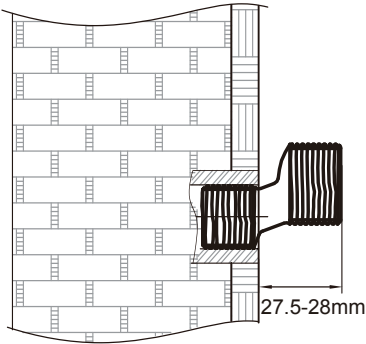
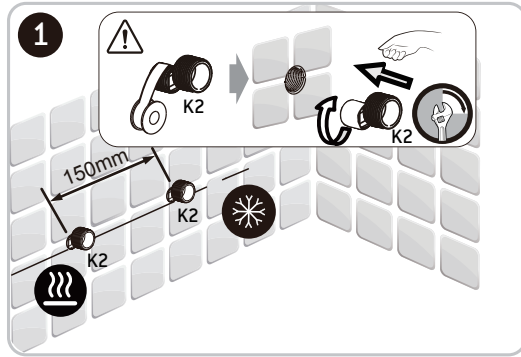


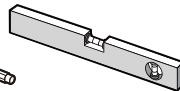
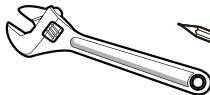
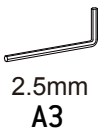
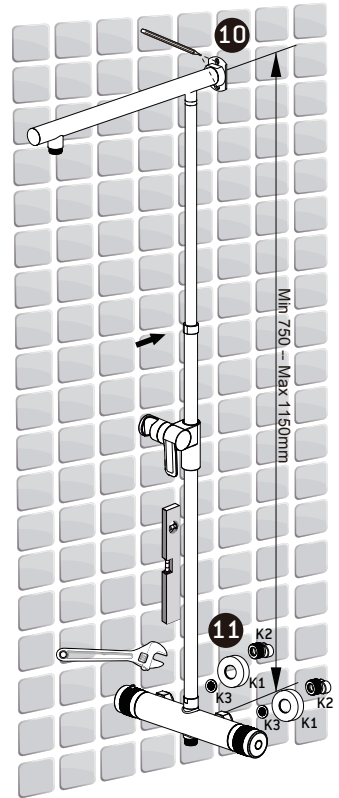
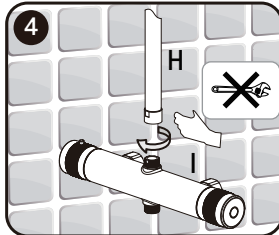
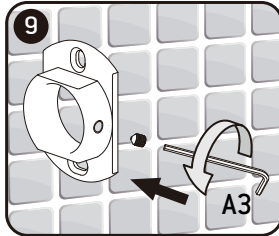
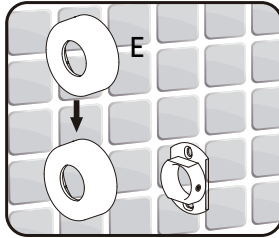
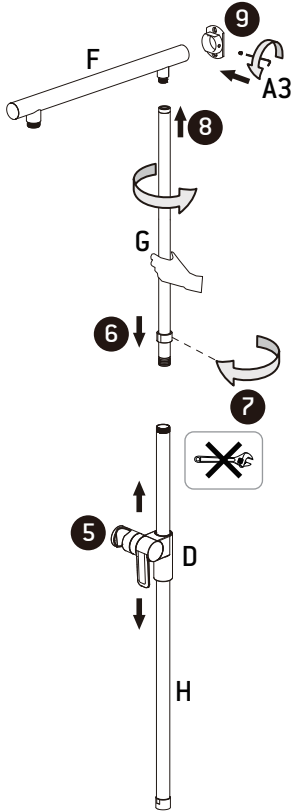
2

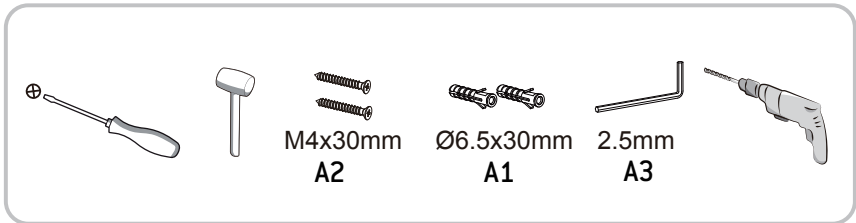
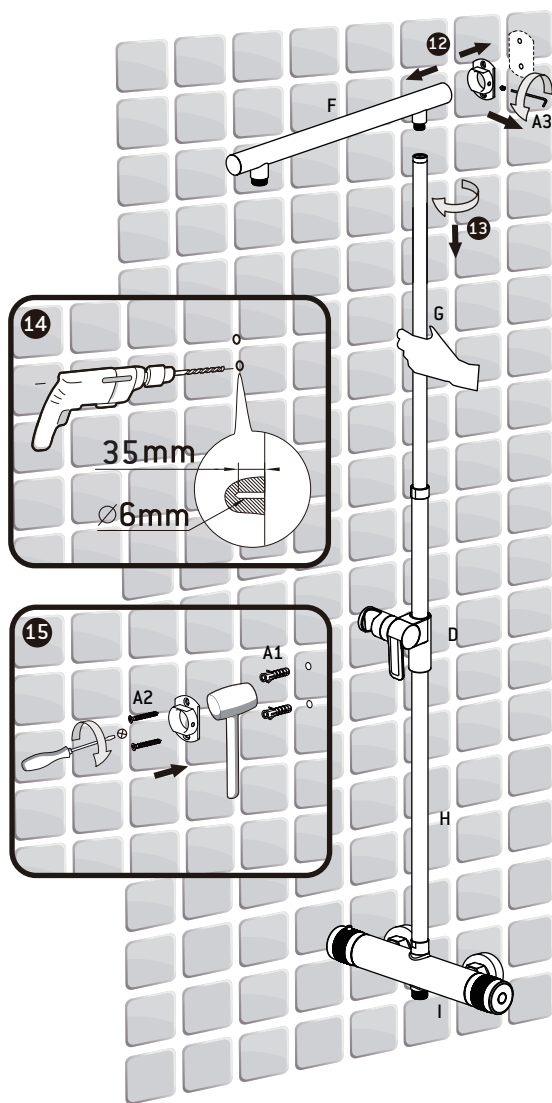


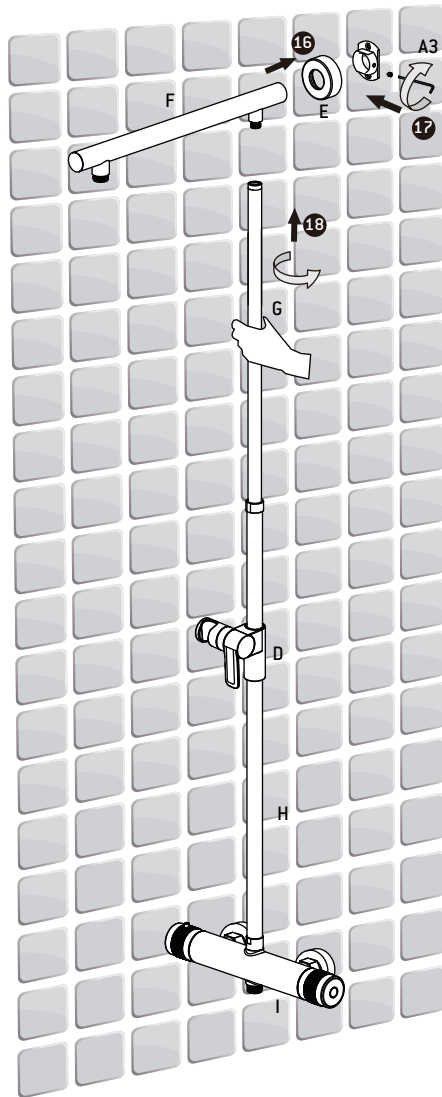
3



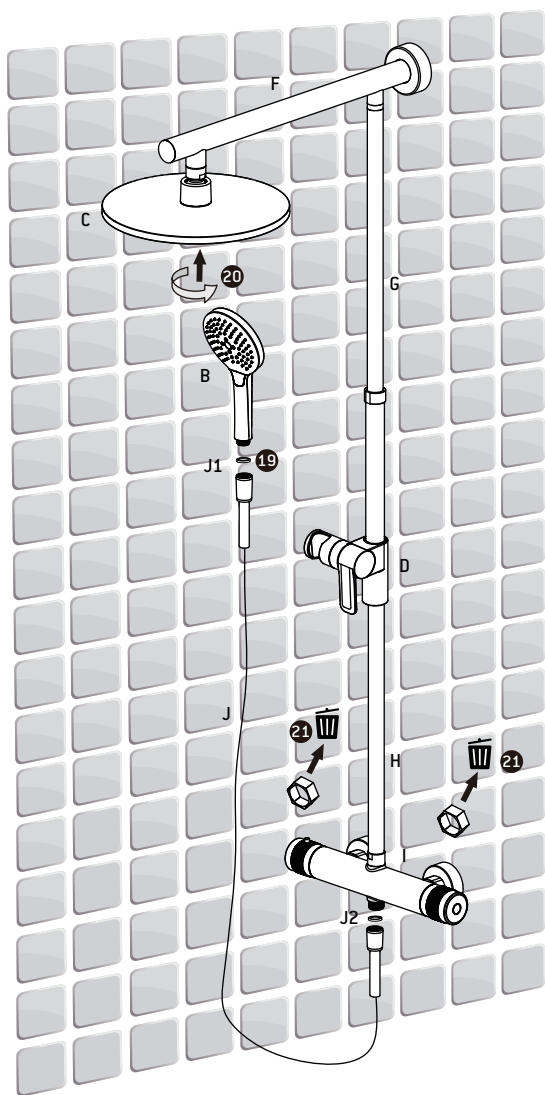






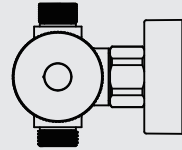
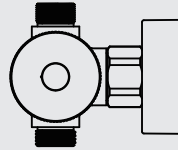
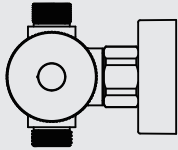


2.5mm
A3

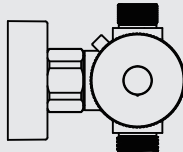




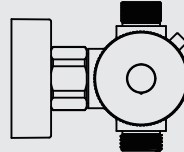
1.a



1.b

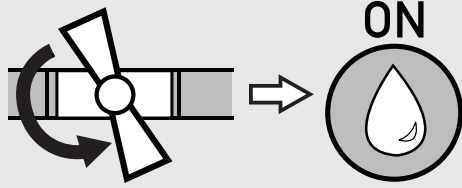


38°C

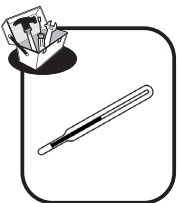
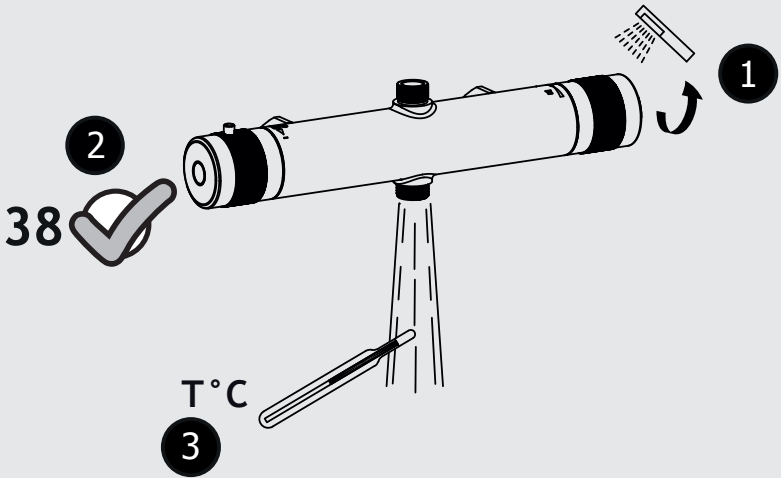




1



2

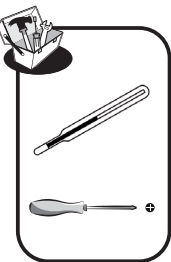
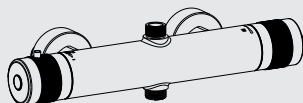
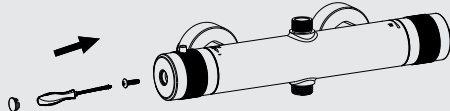
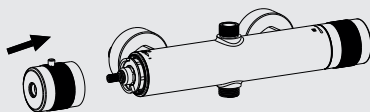
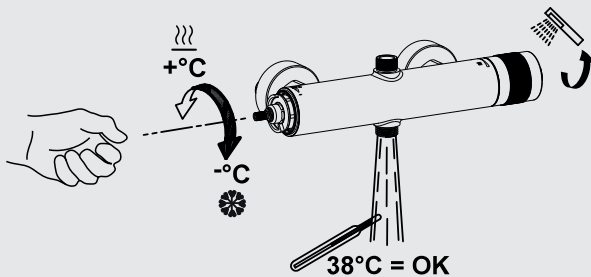
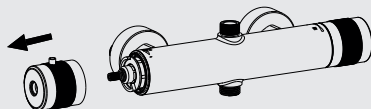
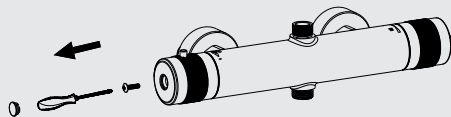


3 $T^{\circ}\text{C} \cong 38^{\circ}\text{C}$ → OK

$T^{\circ}\text{C} \neq 38^{\circ}\text{C}$ →  11

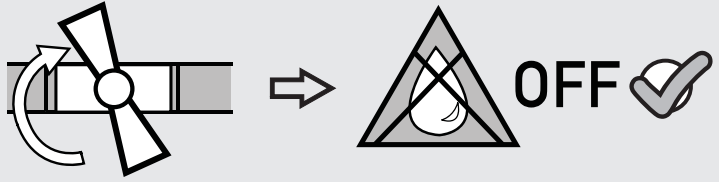


3

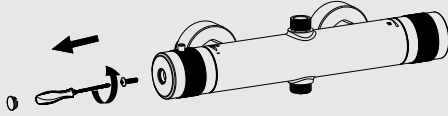




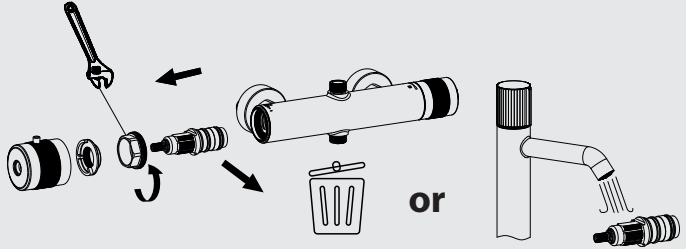
1



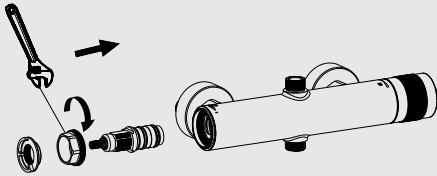
2



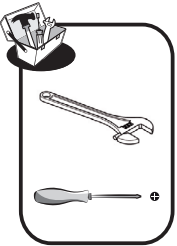
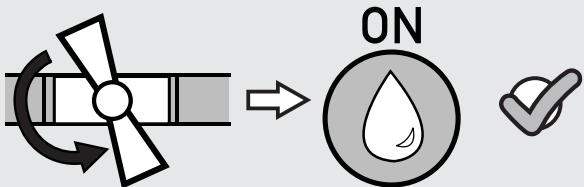
3



4

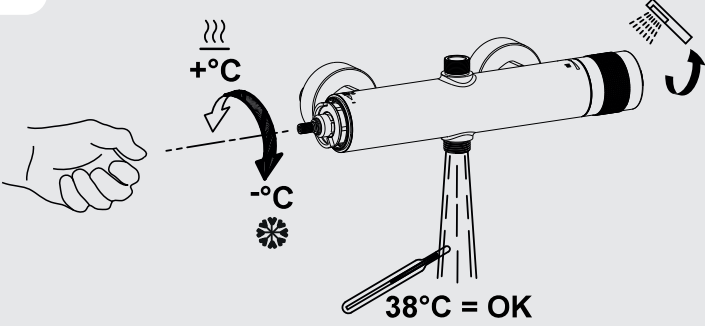


5

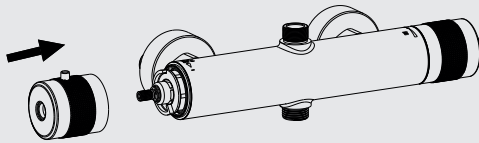




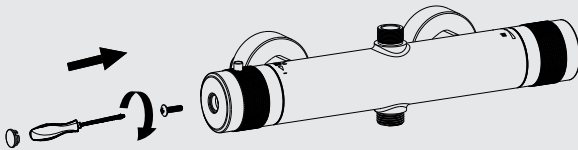
6



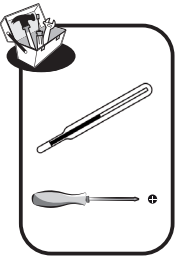
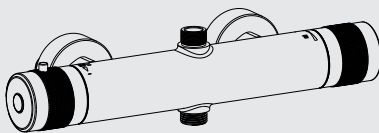
7



8

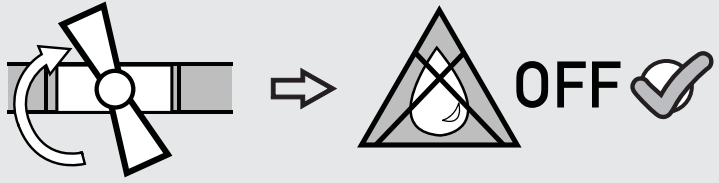


9

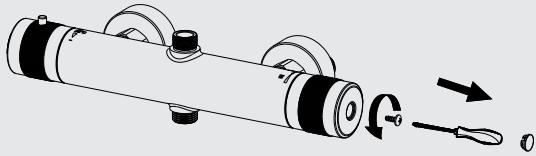




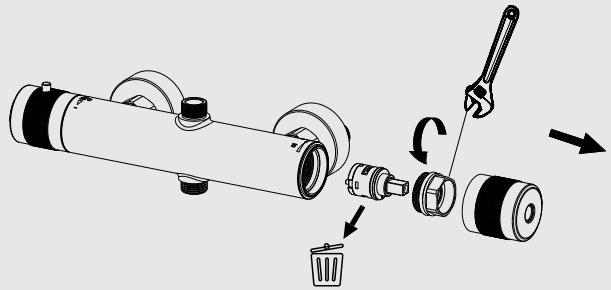
1



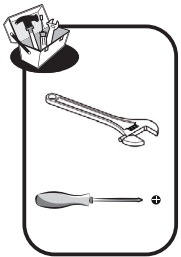
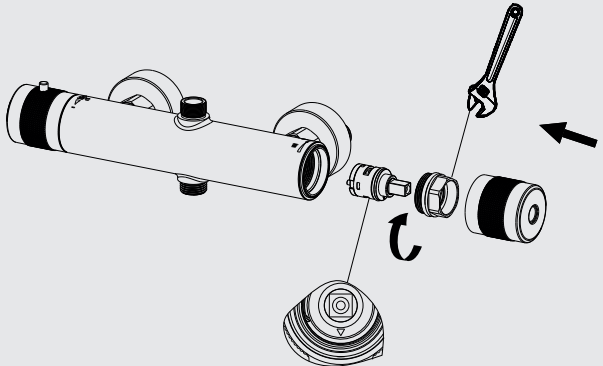
2



3

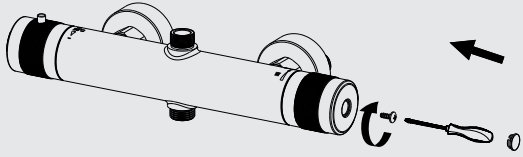


4

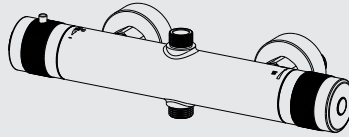




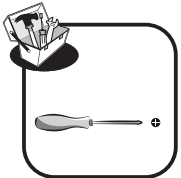
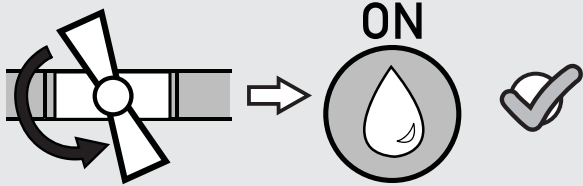
5



6



7



	<input type="radio"/> D Empfohlen <input type="radio"/> I Consigliato <input type="radio"/> S Rekomenderat <input type="radio"/> SK Odporúčané	<input type="radio"/> F Recommandé <input type="radio"/> NL Aanbevolen <input type="radio"/> CZ Doporučeno <input type="radio"/> RO Recomandat	<input type="radio"/> D Höchstens <input type="radio"/> I Massimo <input type="radio"/> S Maximal <input type="radio"/> SK Maximum	<input type="radio"/> F Maximum <input type="radio"/> NL Maximum <input type="radio"/> CZ Maximum <input type="radio"/> RO Maxim
<input type="radio"/> D Betriebsdruck <input type="radio"/> F Pression de fonctionnement <input type="radio"/> I Pressione di esercizio <input type="radio"/> NL Bedrijfsdruk <input type="radio"/> S Driftstryck <input type="radio"/> CZ Provozní tlak <input type="radio"/> SK Prevádzkový tlak <input type="radio"/> RO Presiunea de funcționare	0.5-5 bar		10 bar	
<input type="radio"/> D Wassertemperatur <input type="radio"/> F Température de l'eau <input type="radio"/> I Temperatura dell'acqua <input type="radio"/> NL Watertemperatuur <input type="radio"/> S Vattentemperatur <input type="radio"/> CZ Teplota vody <input type="radio"/> SK Teplota vody <input type="radio"/> RO Temperatura apei	55-65°C		90°C	
<input type="radio"/> D Wasseranschluss <input type="radio"/> F Raccordement d'eau <input type="radio"/> I Allaccio acqua <input type="radio"/> NL Watertoever <input type="radio"/> S Vattenanslutning <input type="radio"/> CZ Vodní přípojka <input type="radio"/> SK Vodná prípojka <input type="radio"/> RO Racord de apă	<input type="radio"/> D warm = links / kalt = rechts <input type="radio"/> F chaude = à gauche/froid = à droite <input type="radio"/> I calda = sinistra / fredda = destra <input type="radio"/> NL warm = naar links / koud = naar rechts <input type="radio"/> S varmt = = vänster / kallt = höger <input type="radio"/> CZ teplá = vlevo/studená = vpravo <input type="radio"/> SK teplá = vľavo / studená = vpravo <input type="radio"/> RO cald = stânga / rece = dreapta			