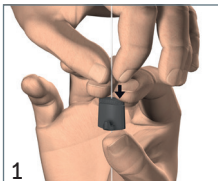
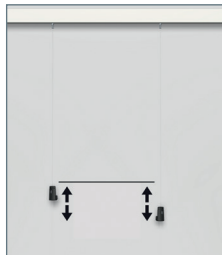
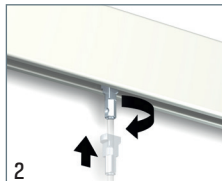


# BOTANIQ HANGING FLOWERPOT

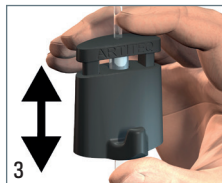
## A ADJUST WIRES TO THE DESIRED LENGHT / HEIGHT



1 Slide the Micro Grip hook on the Twister wire.



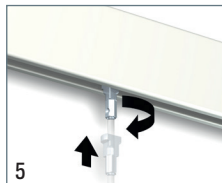
2 Twist & turn both Twister wires with Micro Grip hook in the rail.



3 Adjust both Micro Grip hooks at the same height.



4 Make sure both Micro Grip hooks are at the desired height for the Botaniq.

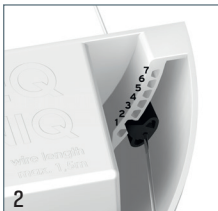


5 Twist & turn both Twister wires out of the rail.

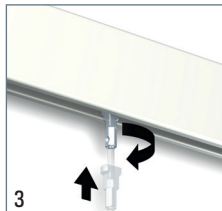
## B HANG BOTANIQ FLOWERPOT



1 Pull the Twister wires from underneath the Botaniq through the opening.

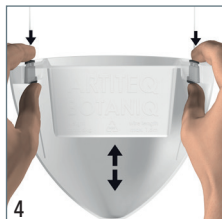


2 Position the Micro Grip hook in one of the 7 holes to lock the hook onto the Botaniq.



3 Twist & turn both Twister wires with Botaniq in the rail.

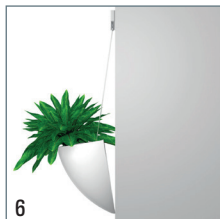
# BOTANIQ HANGING FLOWERPOT



4  
If desired, adjust the height with the Micro Grip hook.



5  
Add the plant in the Botaniq with flowerpot or directly with soil.



6  
Check for tilting of the Botaniq.



7  
If the Botaniq tilts forward, adjust the Micro Grip hook forwards towards pos. 1. When tilting backward, adjust the Micro Grip hook backwards towards pos. 7.



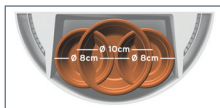
8  
Botaniq is hanging stable against the wall.



9  
Roll the remaining wire and stow at the back of the Botaniq.



Instruction video



Botaniq can hold 2x 8cm or 1x 10cm flowerpot. Or place the plant directly with soil.